

**3rd & 4th Class
Maths**



Capacity

Today we learned all about capacity.

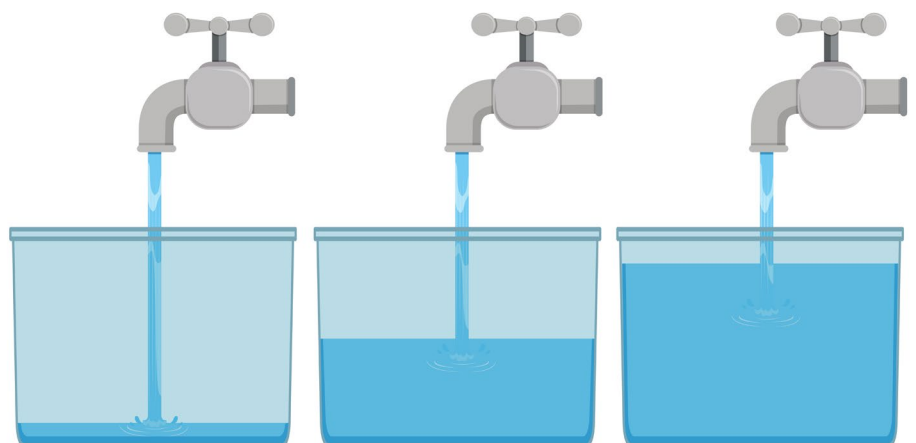
Capacity is the amount that something can hold.

Múinteoir John told us another way of looking at it, capacity is how much it takes to fill an object.

For example, how much water does it take to fill a container.

We learned that $1000\text{ml} = 1 \text{ litre}$ and $500\text{ml} = \frac{1}{2} \text{ a litre}$.

But remember 1 litre of liquid can look different depending on what container it is in.





Litre in Disguise!

See if you can tell which containers have a litre of liquid in them

A)



B)



C)



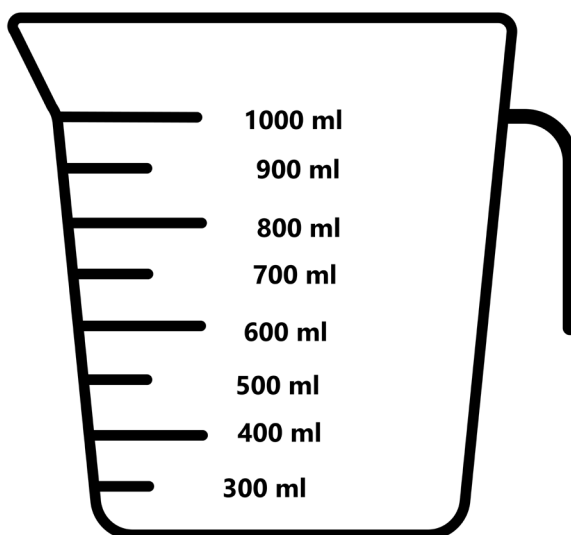
The answer is that they are ALL holding 1 litre of liquid. Remember capacity is how much it takes to fill an object or container and not the height of it!



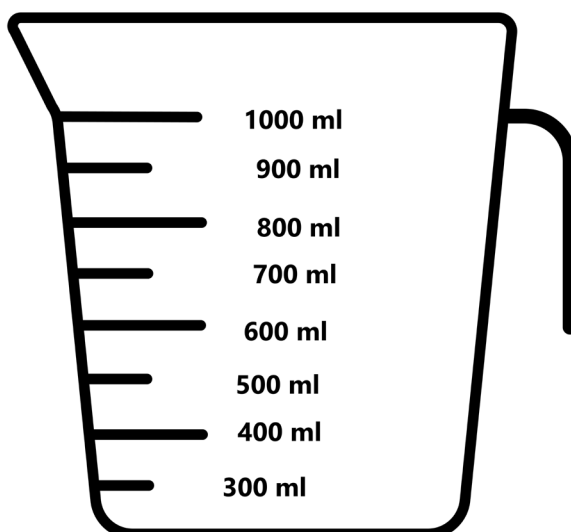
Fill the jug

Colour each jug to show the correct amount

A) 500ml



B) 1000ml

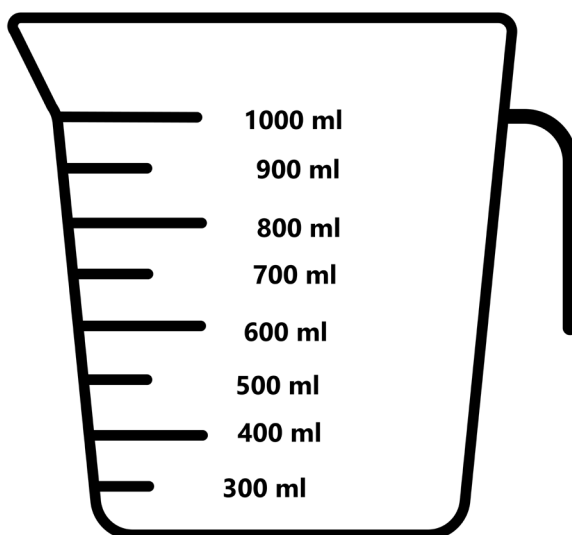




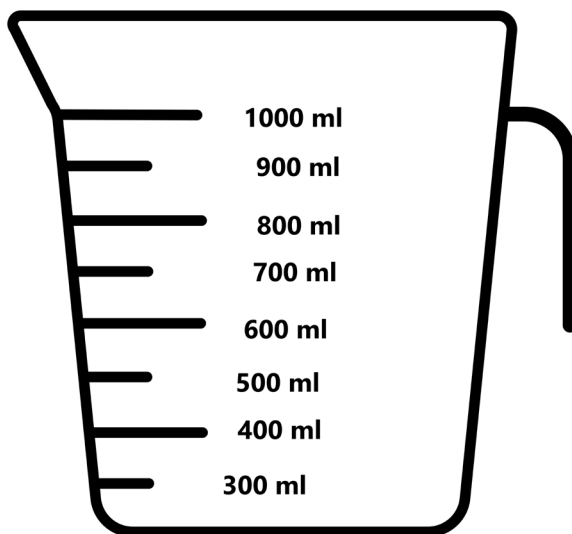
Fill the jug

Colour each jug to show the correct amount

C) 300ml



D) 1 litre





Home Capacity challenge

See if you can match the following capacity with household containers and objects

A) 80 Litres

B) 20 Litres

C) 7 Litres

D) 1 Litre

E) 45 Litres

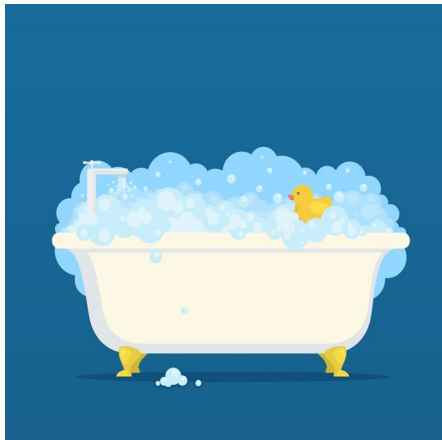
1) Washing Machine



2) Toilet flush



3) A Full Bathtub



4) Sink full of water



5) Water Pistol

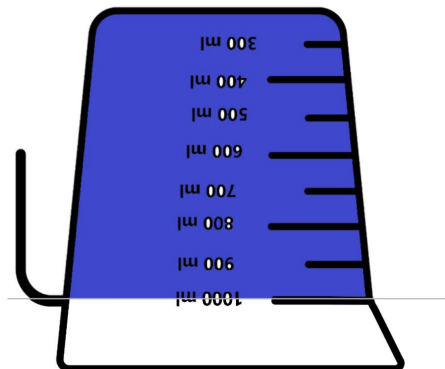




Answers

Fill the Jug Challenge

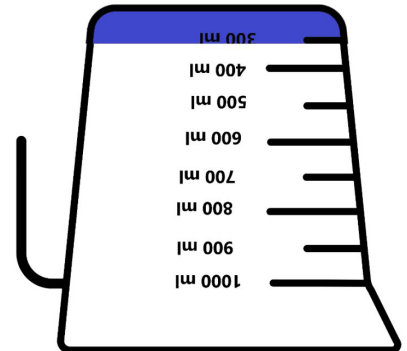
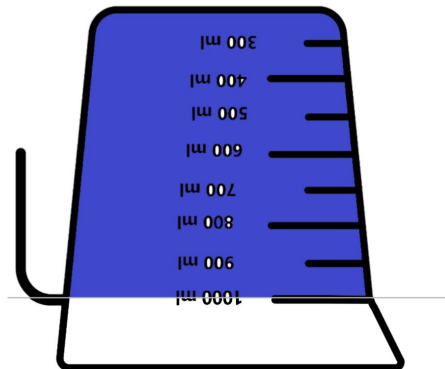
A) 500ml



A) 1000ml

B) 300ml

B) 1000 ml is the same as one litre!



Capacity Home Challenge

A-2 A full bath contain on average 80 litres of water

B-3 A sink full of water has 20 litres of water

C-4 When you flush your toilet, it uses on average 7 litres of water

D-5 A big water pistol has 1 litre of water

E-1 A full washing machine has a capacity of 45 litres