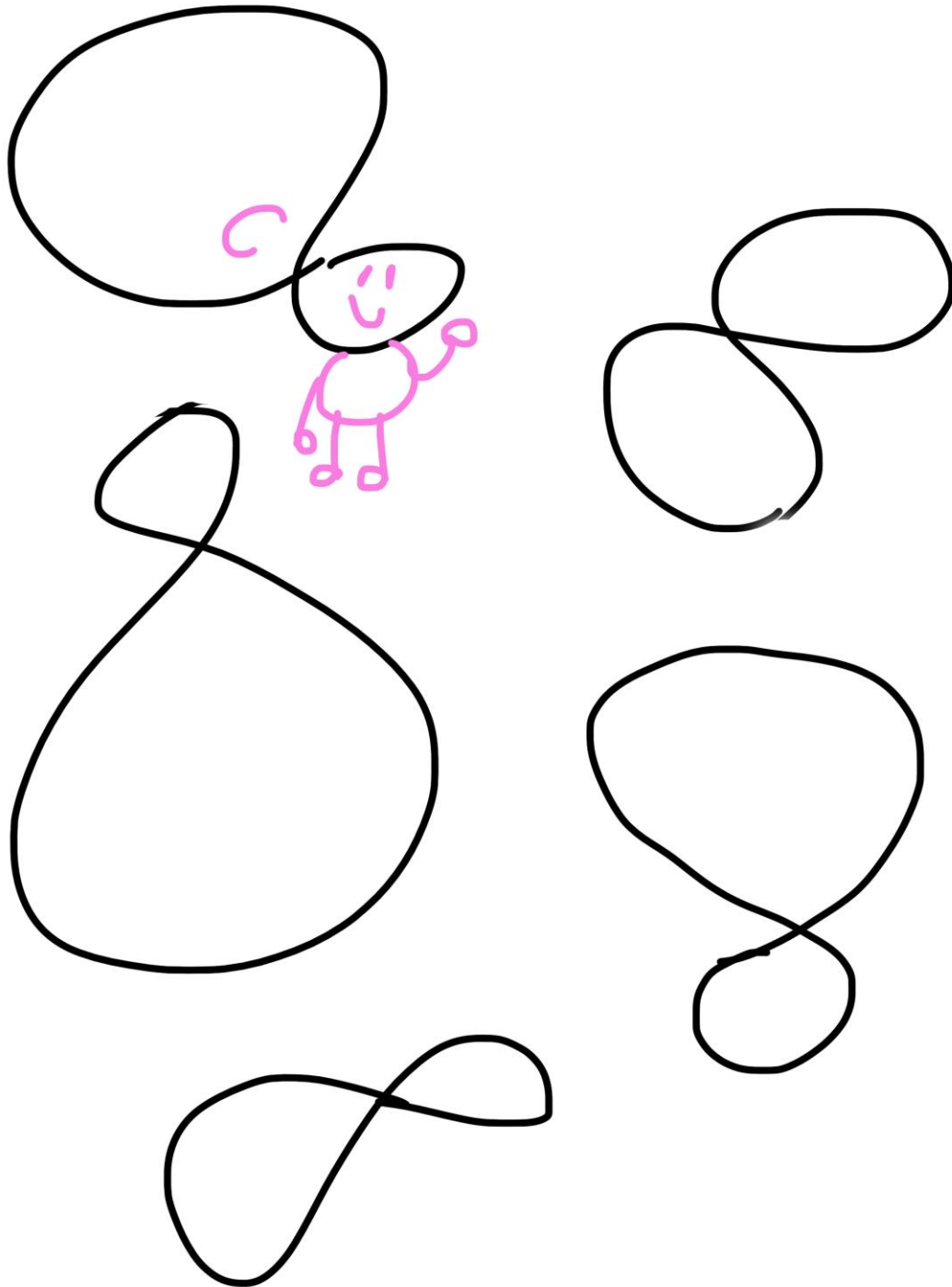


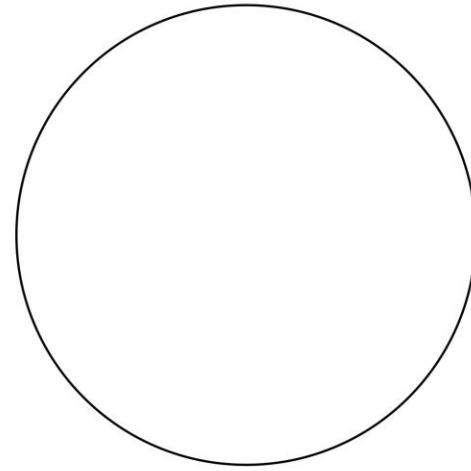
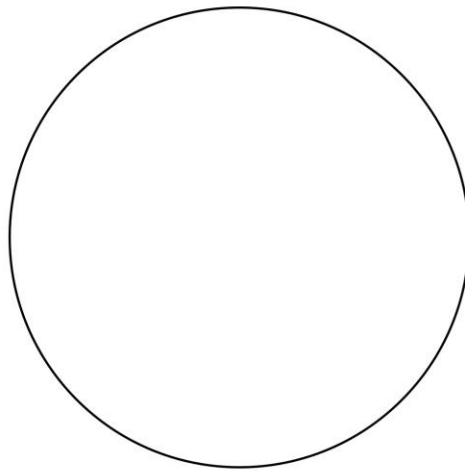
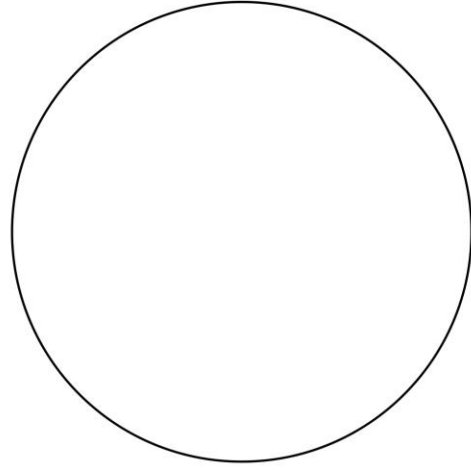
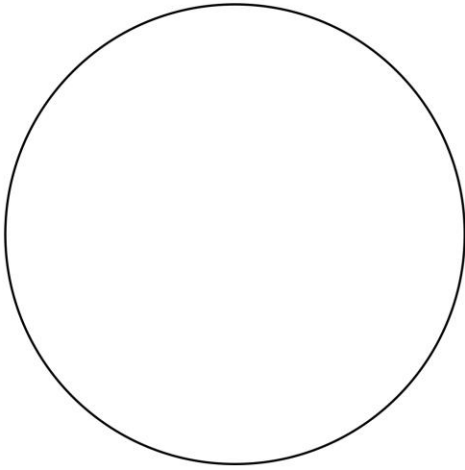
## Character Design

Try and make characters out of these shapes! The first one is done as an example.



# Thaumatrope

Cut out a circle and draw the two parts of your animation on the front and the back.

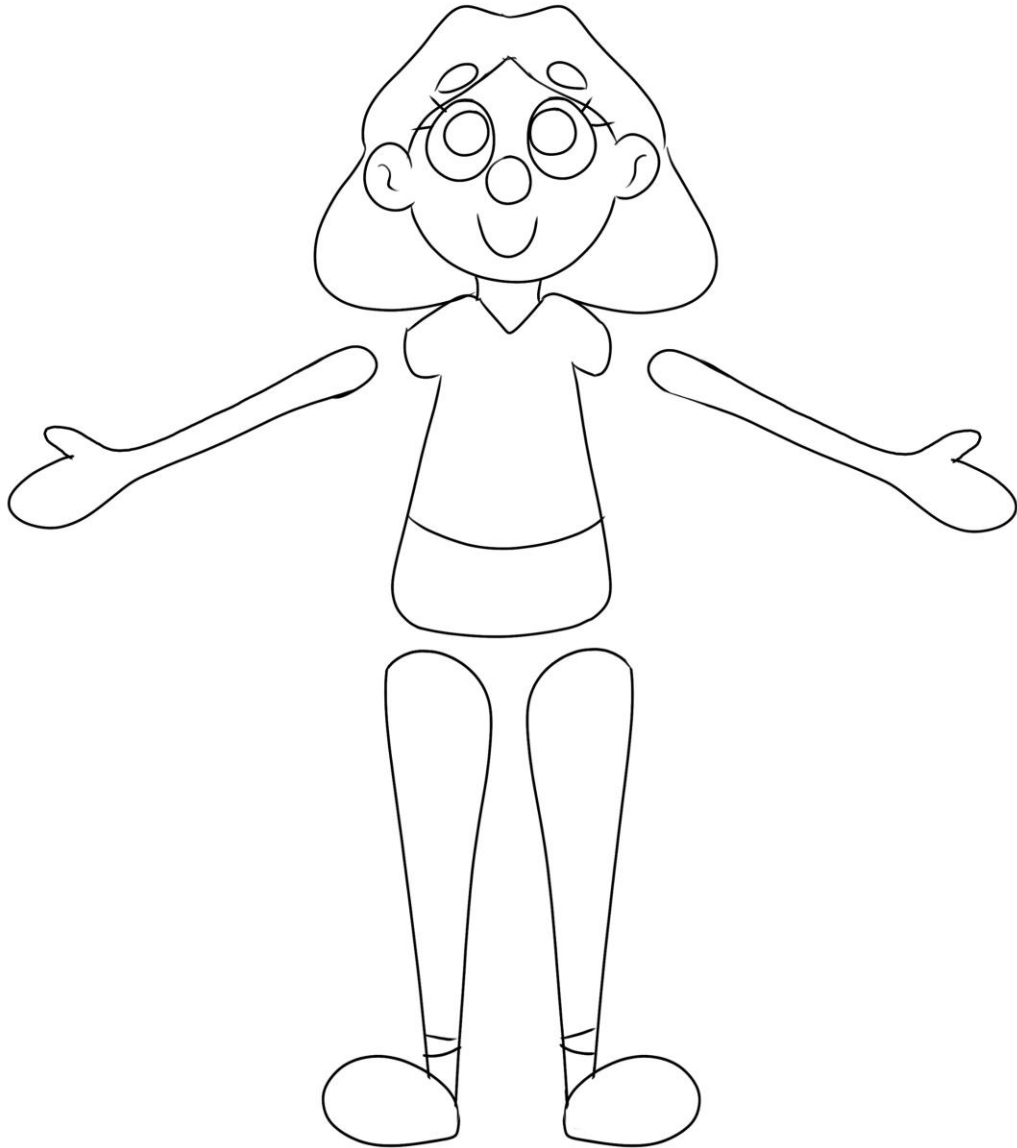


Put two pieces of string in the circle, one at the top and one at the bottom, OR stick the circle to a stick.

Twirl it quickly to see your animation!

## **Paper Doll**

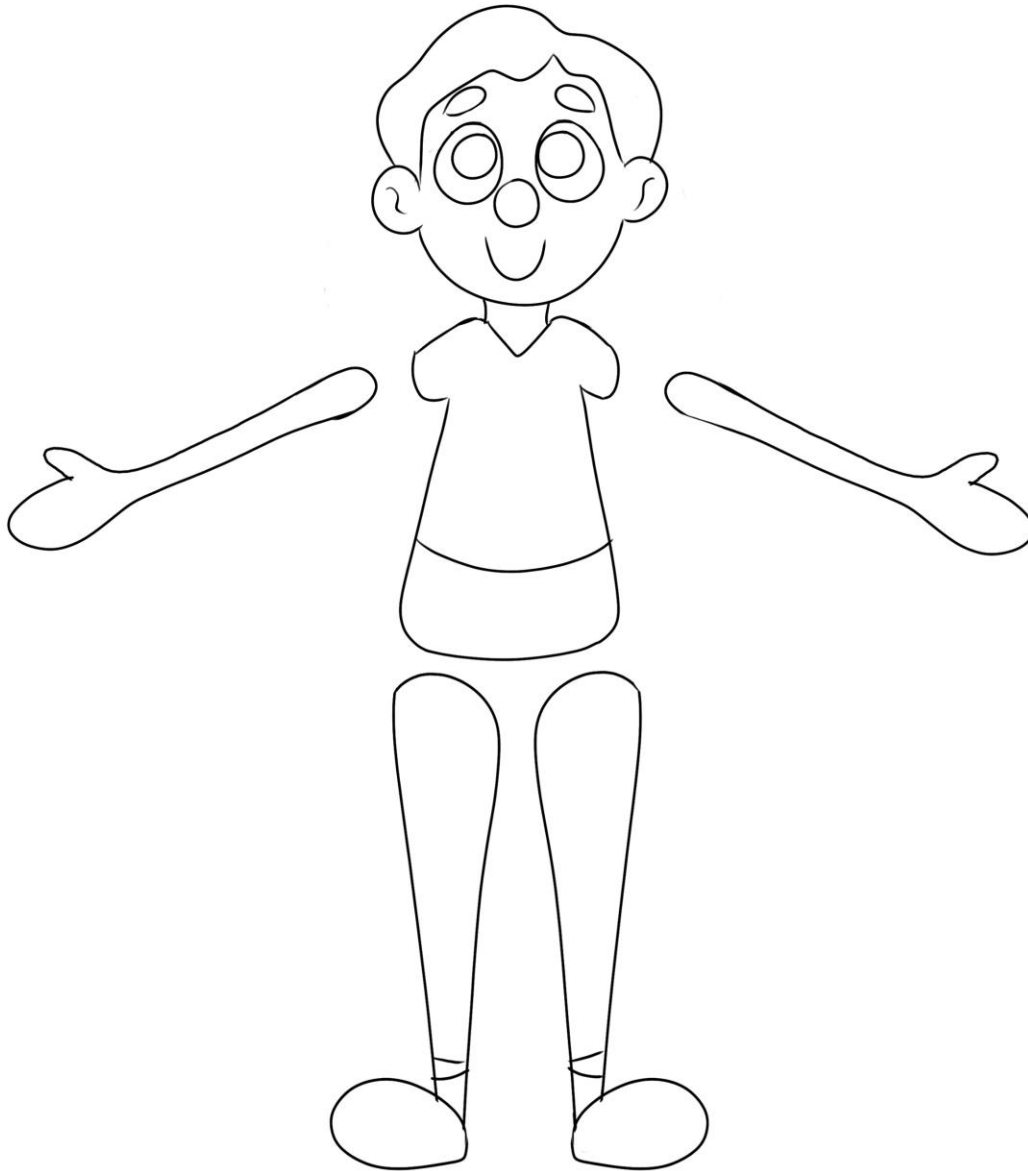
**With the help of a grown up, carefully use a scissors to cut out the pieces of the paper doll.**



**Use blue tack to stick the pieces of the doll together.  
Try move the arms and legs to make a really fun pose!**

## **Paper Doll**

**With the help of a grown up, carefully use a scissors to cut out the pieces of the paper doll.**



**Use blue tack to stick the pieces of the doll together.  
Try move the arms and legs to make a really fun pose!**